

Kempa



2024



SHOES & BALLS



SOLES BY  **MICHELIN**

KPWR

© 2024

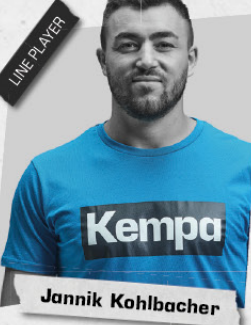
KOURTFLY



LEFT WING



Uwe Gensheimer



Jannik Kohlbacher



Felix Claar



Nathalie Hagman



Renars Uscins



Matteo Menges



Christoph Theuerkauf



Martin Strobel



Mia Emmenegger



Xenia Smits



Andreas Wolff



Johanna Stockschröder



Janus Dadi Smarason



Mohamad Sanad



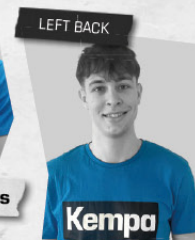
Kresimir Kozina



Maik Machulla



Kristian Sæverås



Sören Steinhaus



Max Darij



Linn Blohm



Oscar Bergendahl



Marius Steinhauser



Lukas Stutzke



Tim Nothdurft



Evgeni Pevnov



Tim Hornke



Lotta Heider



Thomas Mrkva



Matthias Musche



Miloš Vujovic



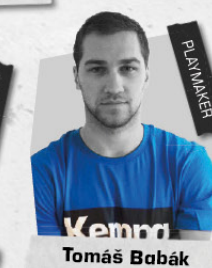
Adrien Dipanda



Samuel Zehnder



Annika Ingenpass



Tomáš Babák



Eloy Morante Maldonado



Veronika Mala

KOURTFLY

1 KPWR

- Unique midsole design that absorbs the impact forces and optimally transfers them to the outsole
- secure fit
- highest possible energy return
- perfect stability
- 100% EVA, 20% of which is derived from recycled materials

3 For the Planet

The light cushioning consists of 100% ethylene vinyl acetate (20% of which is recycled ethylene vinyl acetate).



2 Ultra-Light Breath-Mesh

- natural feel
- efficient moisture transport from the inside to the outside
- maximum comfort

4 Protection Zone

- protects you and your shoe
- enhances the adhesion
- secure grip on the ground even in an extreme incline position

SOLES
BY





01

SOLES BY /  MICHELIN

NEW

COLOUR 02 AVAILABLE FROM 2024

KOURTFLY



Art. 2008672

Size 6-12, 13, 14, 15

Material upper material: textil + 3D-print,
lining: textil, sole: rubber

01 white/blue, 02 blue/white



02



01

SOLES BY /  MICHELIN

NEW

KOURTFLY W



Art. 2008673

Size 3,5-10

Material upper material: textil + 3D-print,
lining: textil, sole: rubber

01 white/purple





1 KPWR

2 Ultra-Light Breath-Mesh

3 Torsion System

4 Microfiber Reinforcement

5 For the Planet

THE SEAMLESS FUSION OF INNOVATIVE TECHNOLOGY AND MODERN STYLE DEFINES KOURTFLY. THIS SHOE COMBINES OUR STRONGEST FEATURES, INCLUDING KPWR, ULTRA-LIGHT BREATH-MESH, TORSION SYSTEM AND MICROFIBER REINFORCEMENT, CREATING A SHOE DESIGNED FOR HIGH PERFORMANCE ON THE COURT.



SOLES
BY



KOURTFLY



1 ERGONOMIC SHAPE

- adapted to the natural rolling motion of your feet
- transfers your power to the ground perfectly

2 TORSION SYSTEM

- maximum stability whether during the jump, in the air or during the landing

3 RE-ACTION ZONE

- secure grip during fast changes of direction and dynamic turning movements
- best possible support during agile and explosive movements

4 SOLES BY MICHELIN

- inspired by Michelin motorsport tyres
- specially developed non-staining rubber compound
- integrated directional tread ensures maximum control

SOLES
BY /  **MICHELIN**

Working together with Michelin, we developed an outsole, guaranteeing excellent and durable performance in terms of grip and durability.

More about our cooperation at:
www.kempa-sports.com/en/michelin

01



SOLES
BY /  **MICHELIN**

NEW

AVAILABLE FROM JUNE 2024

KOURTFLY TWO

Art. 2008674

Size 6-12, 13, 14, 15

Material upper material: textil + 3D-print,
lining: textil, sole: rubber

01 blue/white



01



SOLES
BY /  **MICHELIN**

NEW

AVAILABLE FROM JUNE 2024

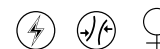
KOURTFLY TWO W

Art. 2008675

Size 3,5-10

Material upper material: textil + 3D-print,
lining: textil, sole: rubber

01 white/grey





NEW

AVAILABLE FROM JUNE 2024

KOURTFLY THREE

Art. 2008676

Size 6–12, 13, 14, 15

Material upper material: textil + 3D-print,
lining: textil, sole: rubber

01 blue/white



NEW

AVAILABLE FROM JUNE 2024

KOURTFLY THREE W

Art. 2008677

Size 3,5–10

Material upper material: textil + 3D-print,
lining: textil, sole: rubber

01 white/blue





01



SOLES
BY MICHELIN



02



NEW

COLOUR 03 AVAILABLE FROM 2024

KOURTFLY JR

Art. 2008682

Size 34-39 (complete laces)

Material upper material: textil, lining: textil,
sole: rubber

01 white/blue, **02** white/purple, **03** blue/white



03



02



SOLES
BY MICHELIN



01



03



NEW

COLOUR 03 AVAILABLE FROM 2024

KOURTFLY KIDS

Art. 2008681

Size 28–33 (velcro closure)

Material upper material: textil, lining: textil,
sole: rubber

01 white/blue, **02** white/purple, **03** blue/white



ONE OF THE
LIGHTEST
SHOES ON THE
MARKET

SOFT FIT

Elastic insock construction
for highest comfort.



W I N G

L I G H T N E S S



Light ethylene vinyl acetate-cushioning with integrated softpad for the best comfort and excellent shock absorption.

POWER CORE



For more control and improved power transmission.

TORSION PLATE



The light cushioning consists of 100% ethylene vinyl acetate (20% of which is recycled ethylene vinyl acetate).

SOLES
BY



AVAILABLE FROM JUNE 2024

09



SOLES
BY /  **MICHELIN**

07



11



NEW

AVAILABLE FROM 2024

WING LITE 2.0



Art. 2008520

Size 6-12, 13, 14, 15

Material upper material: textil + 3D-print,
lining: textil, sole: rubber

07 red/black, **09** white/deep blue, **11** white



09



SOLES
BY /  **MICHELIN**

07



NEW

AVAILABLE FROM 2024

WING LITE 2.0 WOMEN



Art. 2008530

Size 3,5-10

Material upper material: textil + 3D-print,
lining: textil, sole: rubber

07 white/red, **09** white



08



SOLES
BY /  **MICHELIN**

NEW

COLOUR 08 AVAILABLE FROM JUNE 2024

WING 2.0



Art. 2008540

Size 6-12, 13, 14, 15

Material upper material: textil + 3D-print,
lining: textil, sole: rubber

06 black/red, **08** white/deep blue



06



05



SOLES
BY /  **MICHELIN**

NEW

COLOUR 05 AVAILABLE FROM JUNE 2024

WING 2.0 WOMEN

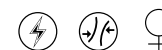


Art. 2008550

Size 3,5-10

Material upper material: textil + 3D-print,
lining: textil, sole: rubber

04 white/red, **05** white/aqua



04



12



SOLES
BY / MICHELIN

Size 28–33 (velcro closure)



Size 34–39 (complete laces)

NEW

AVAILABLE FROM 2024

WING 2.0 JUNIOR

Art. 2008560

Size 28–33 (velcro closure)
34–39 (complete laces)

Material upper material: textil, lining: textil,
sole: rubber

10 black/red, **12** white/deep blue



10





Kempa

Kempa

GAME CHANGER



08



SOLES
BY /  MICHELIN

NEW



WING LITE 2.0 GAME CHANGER

Art. 2008520

Size 6-12, 13, 14, 15

Material upper material: textil + 3D-print,
lining: textil, sole: rubber

08 white/navy



08



SOLES
BY /  MICHELIN

NEW



WING LITE 2.0 W GAME CHANGER

Art. 2008530

Size 3,5-10

Material upper material: textil + 3D-print,
lining: textil, sole: rubber

08 white/aqua





NEW



ATTACK ONE 2.0 GAME CHANGER

Art. 2008590

Size 6–12, 13, 14, 15

Material upper material: textil + thermoplastic polyurethane, lining: textil, sole: rubber

05 white/red, **06** white/navy



NEW



ATTACK PRO 2.0 W GAME CHANGER

Art. 2008671

Size 3,5–10

Material upper material: textil + 3D-print, lining: textil, sole: rubber

03 white/red, **04** white/aqua



ATTACK TWO 2.0

Art. 2008630

Size 6–12, 13, 14, 15

Material upper material: textil + 3D-print, lining: textil, sole: rubber

02 black/aqua, **05** black/rainbow, **06** cool grey





NEW

ATTACK THREE 2.0 GAME CHANGER

Art. 2008640

Size 3,5–12, 13

Material upper material: textil, lining: textil,
sole: rubber

08 red, **09** black/red, **10** white/navy



ATTACK THREE 2.0 W GAME CHANGER

Art. 2008650

Size 3,5–10

Material upper material: textil, lining: textil, sole: rubber

05 rose, **06** white/aqua



SOLES BY MICHELIN

Size 34-39 (complete laces)

ATTACK 2.0 JUNIOR GAME CHANGER

Art. 2008660

Size 28–33 (velcro closure)
34–39 (complete laces)

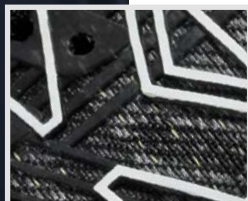
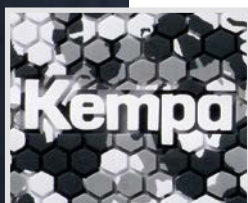
Material upper material: textil, lining: textil,
sole: rubber

07 mint, **08** white/navy, **09** white/rose



Size 28-33 (velcro closure)

CONTROL
THE **GAME**



Lukas Stutzke

02



MATRIX

SOLES
BY



01



ATTACK MID

Art. 2008670

Size 6-12, 13, 14, 15

Material upper material: textil + thermoplastic
polyurethane, lining: textil, sole: rubber

01 black, **02** black/white



02



Sneakers with knitted upper



06



K-FLOAT

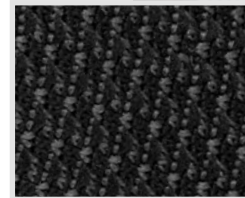
Art. 2008570

Size 3,5–12, 13, 14, 15

Material upper material: textil, lining: textil,
sole: ethylene vinyl acetate + rubber

02 black, **06** marine

CUSTOMIZABLE



Franziska Peter





SPECTRUM

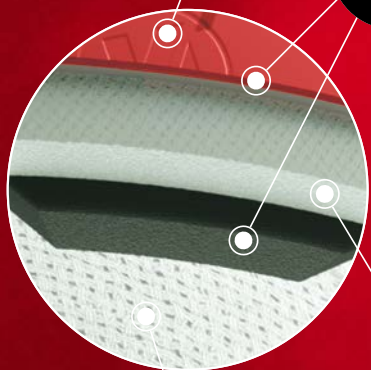
SYNERGY PRO

K

Surface material with microfiber structure provides optimum grip and excellent ball control.

X2

Multi-layered X2 lamination increases the rebound and softness of the ball.



textile lamination provides excellent roundness and supports the stability and robustness.

JL

The latex bladder with textile lamination prevents over pumping while minimising air loss.



SYNERGY, the unique handball technology from Kempa.

The innovative production procedure and revolutionary non-slip material improves the roundness and guarantees high form stability.

The result: more **GRIP**, better **FEEL FOR THE BALL**, better **CONTROL**.



BALL-REFINEMENT

CUSTOMIZE YOUR BALL WITH NUMBER, NAME OR LOGO

The logo is printed directly onto the surface of the ball using industrial DTF printing.

Delivery time 10 days from sign-off.

NUMBER

NAME

LOGO

Ask your
Kempa
dealer



NEW

02



top matchball with an unique 30-panel-construction

very soft and grippy upper material with Kempa embossing for best grip and outstanding ball control

excellent rebound combined with a soft feel for the ball thanks to the multilayer foam lamination

latex bladder with textile lamination prevents from pumping over and provides air retention at the same time

suitable for the use of resin

SPECTRUM SYNERGY PRO

Art. 2001902

Size 2, 3

02 cool grey/warm red



01



excellent match and training ball with a unique 30-panel-construction

soft and grippy upper material with Kempa embossing for best grip and an outstanding ball control

very good rebound combined with a comfortable feel for the ball thanks to the additional foam layer

latex bladder with textile lamination prevents from pumping over and provides air retention at the same time

suitable for the use of resin

SPECTRUM SYNERGY PLUS

Art. 2001914

Size 0, 1, 2, 3

01 sweden yellow/sweden blue



NEW

02



top matchball

very soft and grippy upper material with Kempa embossing for best grip and an outstanding ball control

excellent rebound combined with a soft feel for the ball thanks to the concentrated multilayer foam lamination

the latex bladder provides outstanding rebound and air retention at the same time

suitable for the use of resin

BUTEO

Art. 2001903

Size 2, 3

02 orange/blue

PVC
FREE

NEW

03



high quality match and training ball with a unique 30-panel-construction

soft and grippy upper material with Kempa embossing for more grip and outstanding ball control

very good rebound with a comfortable feel for the ball thanks to the additional foam layer

latex bladder with textile lamination prevents from pumping over and provides air retention at the same time

suitable for the use of resin

02



SPECTRUM SYNERGY PRIMO

Art. 2001915

Size 0, 1, 2, 3

02 grey/navy, **03** sweden blue/brilliant white



PVC
FREE

04



high quality match and training ball with a unique 30-panel-construction

soft and grippy upper material with Kempa embossing for more grip and outstanding ball control

very good rebound with a comfortable feel for the ball thanks to the additional foam layer

latex bladder with textile lamination prevents from pumping over and provides air retention at the same time

suitable for the use of resin

Innovative surface structure made of PU material for unique grip

LIMITED EDITION

SYNERGY SPECTRUM PRIMO BLACK & WHITE

Art. 2001890

Size 0, 1, 2, 3

04 black



PVC
FREE

01



excellent training ball

soft and grippy upper material with Kempa embossing for better grip and very good ball control

very good rebound with a comfortable feel for the ball thanks to the additional foam layer

the latex bladder retains its shape and provides outstanding rebound and air retention at the same time

suitable for the use of resin

GECKO

Art. 2001906

Size 0, 1, 2, 3

01 grey/blue



PVC
FREE

NEW

05



durable training ball

grippy upper material with Kempa embossing for better grip and ball control

comfortable feel for the ball thanks to the soft foam lamination

the latex bladder retains its shape and provides outstanding rebound and air retention at the same time

suitable for the use of resin

02



03



04



LEO

Art. 2001907

Size 02 0, 1, 2
03 0, 1, 2, 3
05 0, 1, 2, 3

02 bordeaux/black, 03 blue/black, 04 grey/black, 05 mint/black,



PVC
FREE

NEW

04



lightweight training and match ball for children

grippy PU upper material with Kempa embossing for more grip and ball control

comfortable feel for the ball thanks to the soft foam lamination

the latex bladder retains its shape and provides outstanding rebound and air retention at the same time

01



02



TIRO

Art. 2001908

Size Farbe 01 00
Farbe 02 0
Farbe 04 1

01 fluo orange/black, 02 fluo grün/black, 04 kempablue/black



PVC
FREE LITE

NEW

02



methodology ball for kids

soft and easy to push handball

grippy upper material

enables better ball control and thus a higher throwing quality

supports children in learning the correct throwing technique

not suitable for dribbling

SOFT GRIP GAME CHANGER

Art. 2001895

Size

02 grey/navy



02



perfectly suited for use on sand

due to the unique
PVC material, the ball
surface is easy to grip

the contrasting colour gives the ball a strong perception

01



SOFT BEACH

Art. 2001897

Size Color **01** 2
Color **02** 3

01 fluo red, **02** fluo blue



05



durable foam ball

low risk of injury

suitable for children

suitable for school sports and recreation

SOFT

Art. 2001894

Size one size

05 ice grey/fluo orange



01



Plush ball in handball design

very light and soft

SOFT KIDS

Art. 2001896

Size one size

Material 100% polyester

01 kempablue/fluo yellow



02



weighted ball (600gr)

good grip, durable

TRAINING 600

Art. 2001823

Size 2

02 fluo yellow

PVC
FREE

02



weighted ball (800gr)

good grip, durable

TRAINING 800

Art. 2001824

Size 3

02 fluo yellow

PVC
FREE

Baden®



KEMPA X BADEN

**EVERY GAME STARTS WITH A BALL.
A BALL IS AN INVITATION TO PLAY.**

BADEN produces balls that allow players to perform at their highest level. The aim is to develop the best balls, full of devotion and passion for the sport. Like the athletes, BADEN pushes their limits to improve the sport and the game experience. These balls are there for the players.

Since BADEN was founded, they have been pioneers in basketball in the US. They are passionate about developing balls that players love and that enhance the game. By inventing the women size basketball, BADEN's commitment to community, equality, and teamwork is evident.

Sport rewards us, makes us dream, take risks, and believe in ourselves. BADEN is really excited to continue to change the game and the balls.

orange



built by the player, for the player

advanced microfibre leather

Cushioned Control Technology (CCT)

symmetrical Panel System

recessed Stealth Valve

NEW

ELITE PRO NFHS

Art. 303000106 orange Size 6
Art. 303000107 orange Size 7

orange



Cushioned Control Technology (CCT)

symmetrical Panel System

recessed Stealth Valve

gameday at an everyday price

premium microfiber leather

NEW

RIVAL NFHS

Art. 303000205 orange Size 5
Art. 303000206 orange Size 6
Art. 303000207 orange Size 7

orange



the Crossover's flex composite cover has the soft, tacky feeling of a high-end game ball with added durability for all surface play, great for indoor/outdoor play

Crossover® has our unique symmetrical panel construction

black/orange



NEW

CROSSOVER

Art. 303000405	orange	Size 5
Art. 303000406	orange	Size 6
Art. 303000407	orange	Size 7
Art. 303000505	black/orange	Size 5
Art. 303000506	black/orange	Size 6
Art. 303000507	black/orange	Size 7

orange



deluxe rubber with recessed channels

extremely durable

purple/yellow



NEW

LEGEND

Art. 303000805	purple/yellow	Size 5
Art. 303000806	purple/yellow	Size 6
Art. 303000807	purple/yellow	Size 7
Art. 303000905	orange	Size 5
Art. 303000906	orange	Size 6
Art. 303000907	orange	Size 7

orange



deluxe rubber with recessed channels

extremely durable

red/white



black/white



blue/white



white/red/royal



NEW

AVAILABLE FROM JUNE 2024

BASIC

Art. 303001005	orange	Size 5
Art. 303001006	orange	Size 6
Art. 303001007	orange	Size 7
Art. 303001605	red/white	Size 5
Art. 303001606	blau/white	Size 6
Art. 303001607	black/white	Size 7
Art. 303001705	white/red/royal	Size 5
Art. 303001706	white/red/royal	Size 6
Art. 303001707	white/red/royal	Size 7

grey/red



extremely durable

indoor / outdoor basketball

durable rubber construction

precise hand positioning guides

for both left and right handed shooters

NEW

AVAILABLE FROM JUNE 2024

SKILL SHOOTER

Art. 303002205 grey/red

Size 5

yellow



cushioned synthetic leather cover

precision stitched

premium bladder for maximum air retention

purple



NEW

VIBE

Art. 303001205 yellow

Size 5

Art. 303001305 purple

Size 5

yellow/orange



cushioned synthetic leather cover

precision stitched

premium bladder for maximum air retention

blue/turquoise



NEW

FLARE

Art. 303001405 yellow/orange

Size 5

Art. 303001505 blue/turquoise

Size 5

uhlsport group

Germany, Austria, Switzerland

Germany

uhlsport GmbH
Klingenbachstrasse 3
72336 Balingen
Phone +497433 2680
Fax +497433 268194
Web uhlsport.group
Mail info@uhlsport.com

Austria

uhlsport GmbH
Thomas Steingress
Forchtenau 37
AUT 4971 Auroszmünster
Phone +436645324656
Web uhlsport.group
Mail tsteingress@uhlsport.com

Switzerland

uhlsport Schweiz
Peter Eggimann
Dorfstraße 19
CH 3465 Dürrenroth
Phone +41796455502
Fax +41629641029
Mail peggimann@uhlsport.com

France

uhlsport France

Zone Athéla 2, 170 Impasse du Serpolet
FR 13704 La Ciotat Cedex
Phone +33442088030
Web uhlsport.group/uhlsport-france
Mail uhlsportfr@uhlsport.fr

Spain

uhlsport Ibérica 2006 S.A.

Parque Tomás Caballero nº2
planta 5ª, oficina 8
EDIFICIO FUERTE EL PRINCIPE I
ES 31006 Pamplona - Navarra
Phone +34948206535
Web uhlsport.group/uhlsport-iberica
Mail info@uhlsport-iberica.com

UK

uhlsport UK

David Sanderson
Country Manager
Phone +44 (0) 7939 583876
Mail dsanderson@uhlsport.com
Julie Holtom
Customer Service Representative UK
Phone +44 (0) 1993 228708
Web uhlsport.group/uhlsport-uk
Mail julie@uhlsportuk.com

Sweden

uhlsport Scandinavia AB

Ståhlbergsvägen 13
SE 63221 Eskilstuna
Phone +4616128860
Web uhlsport.group/uhlsport-scandinavia
Mail sweden@kempa-handball.com

Benelux

uhlsport Benelux

Engelse Wandeling 2, K1G
BE 8500 KORTRIJK
Phone 0032 56224046
Mail alain@uhlsport.be
david@uhlsport.be
sebastien.deketelaere@uhlsport.com
manuel.kremer@uhlsport.com
Web uhlsport.group/uhlsport-benelux

International Sales

If you have questions/inquiries for international markets,
please contact **internationalsales@uhlsport.de**



Shoesize

	KIDS															ADULTS														
EUROPE	28	29	30	31	32	33	34	35	36	37	37½	38	38½	39	39½	40½	41	42	42½	43	44	44½	45	45½	46	47	48	49	50	
USA	10	11	12	13	1	1½	2½	3	4	4½	5	5½	6	6½	7	7½	8	8½	9	9½	10	10½	11	11½	12	12½	13½	14½	15½	
UK	10	10½	11½	12½	13½	1	2	2½	3½	4	4½	5	5½	6	6½	7	7½	8	8½	9	9½	10	10½	11	11½	12	13	14	15	
JAPAN	16½	17½	18	18½	19	20	21	21½	22½	23	23½	23,7	24	24,5	25	25½	26	26½	27	27½	28	28½	29	29½	30	30½	31	32	33	

Handballs IHF Standard

Age group	Age	Handball Size
Bambinis	under 6 years	00 (unofficial size)
Minis	ca. 6 – 8 years	0 (unofficial size)
Female youth: C, D, E	8 – 14 years	1
Male youth: D, E	8 – 12 years	1
Female youth: A, B	14 years and older	2
Male youth: C, B	12 – 16 years	2
Male youth: A	16 years and older	3
Men	18 years and older	3

Index Shoes & Handballs





Art.	Name	Page	Art.	Name	Page	Art.	Name	Page
2008672	KOURTFLY	5	2008671	ATTACK PRO 2.0 W GAME CHANGER	18	2001897	SOFT BEACH	27
2008673	KOURTFLY W	5				2001894	SOFT	28
2008674	KOURTFLY TWO	8	2008630	ATTACK TWO 2.0	18	2001896	SOFT KIDS	28
2008675	KOURTFLY TWO W	8	2008640	ATTACK THREE 2.0 GAME CHANGER	19	2001823	TRAINING 600	29
2008676	KOURTFLY THREE	9	2008660	ATTACK 2.0 JUNIOR GAME CHANGER	19	2001824	TRAINING 800	29
2008677	KOURTFLY THREE W	9				2001912	SPECTRUM SYNERGY PURE	29
2008682	KOURTFLY JR	10	2008670	ATTACK MID	20	2001913	SPECTRUM SYNERGY ELIMINATE	29
2008681	KOURTFLY KIDS	11	2008570	K-FLOAT	21			
2008520	WING LITE 2.0	13	2001902	SPECTRUM SYNERGY PRO	23	303000106	ELITE PRO NFHS	31
2008530	WING LITE 2.0 WOMEN	13	2001914	SPECTRUM SYNERGY PLUS	23	303000205	RIVAL NFHS	31
2008540	WING 2.0	14	2001903	BUTEO	24	303000405	CROSSOVER	32
2008550	WING 2.0 WOMEN	14	2001915	SPECTRUM SYNERGY PRIMO	24	303000805	LEGEND	32
2008560	WING 2.0 JUNIOR	15	2001890	SYNERGY SPECTRUM PRIMO	25	303001005	BASIC	32
2008520	WING LITE 2.0 GAME CHANGER	17	2001906	GECKO	25	303002205	SKILL SHOOTER	33
2008530	WING LITE 2.0 W GAME CHANGER	17	2001907	LEO	26	303001205	VIBE	33
2008590	ATTACK ONE 2.0 GAME CHANGER	18	2001908	TIRO	26	303001405	FLARE	33
			2001895	SOFT GRIP GAME CHANGER	27			

Imprint

uhlsport GmbH
Klingenbachstraße 3
72336 Balingen
Germany

Tel: +49 (0) 7433 268-0
Fax: +49 (0) 7433 268-194
E-Mail: info@uhlsport.com

Visit us on



kempa-sports.de

Photography: Marc Schäfer Photography

The artwork in this catalogue was obtained from the following sources:



AFI Andreas Fischer
Alexander Mader
Sascha Klahn
ninostrauch
Marc Fippel Fotografie
Martin Deuring
Janice Bucker
Philippe Riou
Boudewijn Benting
Gerd Hofele – FRISCH AUF!


Göppingen Management & Marketing GmbH
Beks Photographer
VS Photographer
Marie-Louise Vestergaard Stadel Madsen
Jonas Fangel
Sven Kuehne/Stofftacker
VITTA GALLERY

Subject to technical modifications, misprints, errors and price revisions. Colours may appear different in print from the original colours. All prices quoted are manufacturer's recommended prices. Any copying or reproduction of any part of this catalogue is only allowed with the expressed permission of Kempa®. January 2024.

**Supplies are limited.



In the interest of better readability, we refrain from using both the masculine and other forms in the absence of gender-NEUTRAL wording. The chosen masculine formulations therefore apply without restriction to the other genders as well.






Our main catalogues are printed with an innovative UV printing solution to achieve improved recyclability. Thanks to the use of a new type of ink series, the printing ink can be removed more easily in the recycling process, enabling optimal recycling management.

The paper we use for printing, Soporset Premium Offset, has been certified according to the paper specification OCR (ISO 1831:1980), high opacity, with volume, EU Ecolabel and FSC®.





MIX
Papier | Fördert gute Waldnutzung
FSC® C106855

35

Kempa



2024



SHOES & BALLS



SOLES BY /  MICHELIN

KPWR

© 2024

KOURTFLY

